

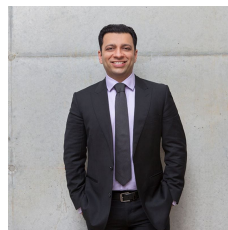
# GUNNING



## G01.3/46A Macleay Street Potts Point NSW

- 55sqm internal (approx.) plus generous kitchen and bathroom amenities.
- Light filled, North facing suite with leafy streetscape outlook to Crick Ave.
- Comfortable and practical workspace, fits up to 8 staff.
- Alternatively, configure as an exclusive Executive office for 2 or 3.
- Effortlessly utilise the space for staff and client meetings.
- Air conditioned.
- Fitted for high-speed, dedicated fibre Internet.
- Includes large screen TV and audio/visual equipment for effortless meetings and video calls.
- Professionally designed and furnished with a modern and tasteful style.
- Separate foyer and waiting area.

**Type** : Offices  
**Building Size** : 55 sqm  
**Land Size** : 55 sqm  
**View** : <https://www.gunningre.com.au/lease/nsw/eastern-suburbs/potts-point/commercial/offices/7706060>



**Tushar Bakshi**  
02 9698 0222



**Daniel Gunning**  
02 9698 0222

[For full version visit the website](https://www.gunningre.com.au)



## Suite G01.3/46a Macleay Street, POTTS POINT



This floor plan is intended as a guide only. Layout dimensions are approximate only. No representations or warranties of any nature whatsoever are given or intended. Any person using this information should rely on their own enquiries. Floor plans by Josef Geranio Studio; info@josefgeranio.com