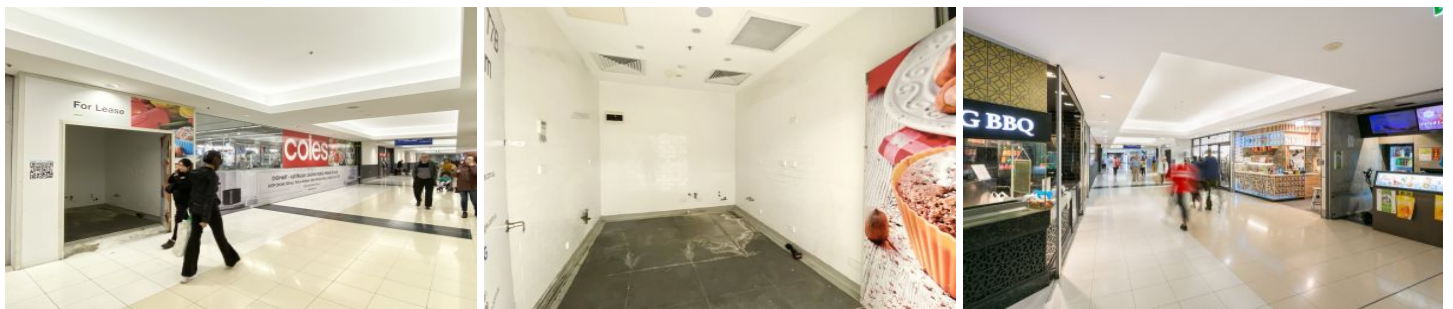


# GUNNING



## Shop 7B/225 Forest Road Hurstville NSW

Gunning Real Estate is pleased to present this small and versatile shop close to Coles and train station entrances.

Join the bustling Hurstville Central Shopping Centre located inside Hurstville train station and anchored by a Coles Supermarket and supported by 38 specialty stores plus 236 car parking spaces for customers.

Key mini majors and nationals include Coles, Priceline Pharmacy, Tong Li Asian Supermarket, McDonalds, Laverty Pathology, 18 Grams, and Gong Cha.

Tenants will have the opportunity to connect with the Centre's consistent level of high foot traffic - above 12 million people p.a. (pre-COVID figure) - pedestrian traffic is constant!

**Building Size** : 9 sqm  
**View** : <https://www.gunningre.com.au/lease/ns/w/st-george/hurstville/commercial/retail/7708382>



**William Wu**  
02 9698 0222



**James McKenny**  
(02) 9310 9208