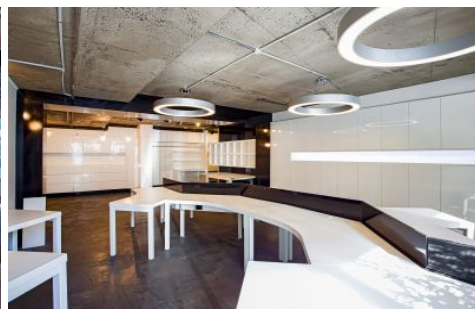


GUNNING



Level 1/200 Riley Street Surry Hills NSW



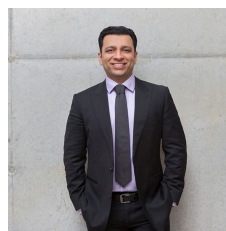
- 91sqm* Open Plan space on Level 1
- Fully fitted with 10 workstations (can be removed)
- Self-contained with internal toilets and kitchenette
- Polished concrete floors & ceiling
- Extra 4sqm Storage space
- Resort style facilities with access to indoor pool, spa and sauna
- 1 Carspace

- Reasonable rent, incentives offered
- Lease available from 6 months to 5 years or longer

*Approximately

Located within the heart of Surry Hills and positioned perfectly along bustling Riley Street, this 91sqm boutique office gives an occupier the opportunity to walk into a

Price : Asking \$50,000 gross pa + GST
Building Size : 91 sqm
Land Size : 91 sqm
View : <https://www.gunningre.com.au/lease/nsw/eastern-suburbs/surry-hills/commercial/offices/7743673>



Tushar Bakshi
02 9698 0222



Daniel Gunning
02 9698 0222



Level 1/200 Riley Street, SURRY HILLS

Total Area : 91m²

This floor plan is intended as a guide only. Layout dimensions are approximate only. No representations or warranties of any nature whatsoever are given or intended. Any person using this information should rely on their own enquiries.
 Floor plans by JOSEF GERANIO STUDIO. E. info@josefgeranio.com