

# GUNNING



## Suite 103/88 Foveaux Street Surry Hills NSW

88 Foveaux Street, Surry Hills is located approximately 450 meters from Central Station. The building has been completely refurbished and is serviced by 2 high speed elevators. Easy access to public transport (Central Bus and Train Stations), restaurants and cafes.

### OFFICE FEATURES:

- 50sqm (approx) on Level 1 of the building
- Open Office and reception area
- Boardroom with glass doors
- Long windows with beautiful leafy outlook
- Storage cabinets
- Air conditioned
- Views to Foveaux Street & great natural light
- 2 new lifts servicing the building
- Freshly painted and brand new carpet
- Kitchenette and Toilets on each level

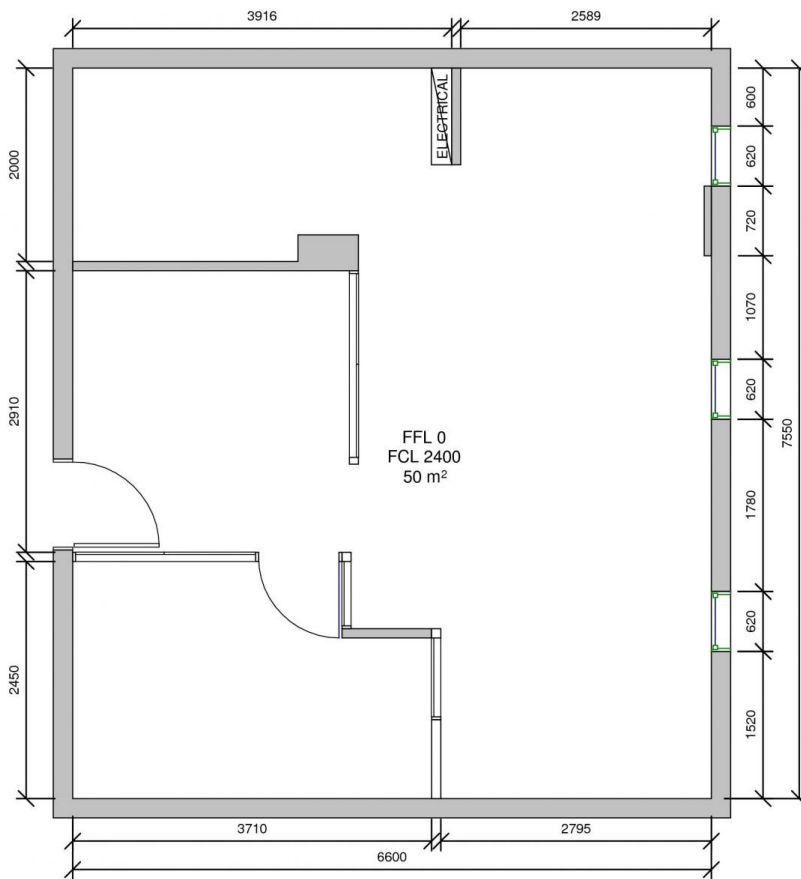
**Price** : \$550 gross per week + GST  
**Building Size** : 50 sqm  
**Land Size** : 50 sqm  
**View** : <https://www.gunningre.com.au/lease/nsw/eastern-suburbs/surry-hills/commercial/offices/7797256>



**Tushar Bakshi**  
02 9698 0222



**Daniel Gunning**  
02 9698 0222



A - 24/10/2023 Existing			
Rev	Desc	Date	By
b o k o r			
architecture-interiors			
level: 1 88 foveaux street			
surry hills nsw 2010 australia			
ph: (02) 9212 4654 f: (02) 9212 4670			
w w w . b o k o r . c o m . a u			
Rev	Desc	Date	By
Rev	Rev	Rev	Rev
Rev	Rev	Rev	Rev
Harvey Strata Management			
Suite 103 - 88 Foveaux St			
Floor Plan			
CONTRACTOR MUST VERIFY ALL DIMENSIONS ON SITE PRIOR TO CONSTRUCTION AND PRIOR TO ANY WORK ON SITE. DIMENSIONS ARE TO BE TAKEN IN PREFERENCE TO SCALE RECORDS. THE DRAWING IS CORRECT AND THE PRECEDENCE OF SCALE RECORDS.			
JA	1 : 50	24.10.2023	
N/A	A100	A	