

GUNNING



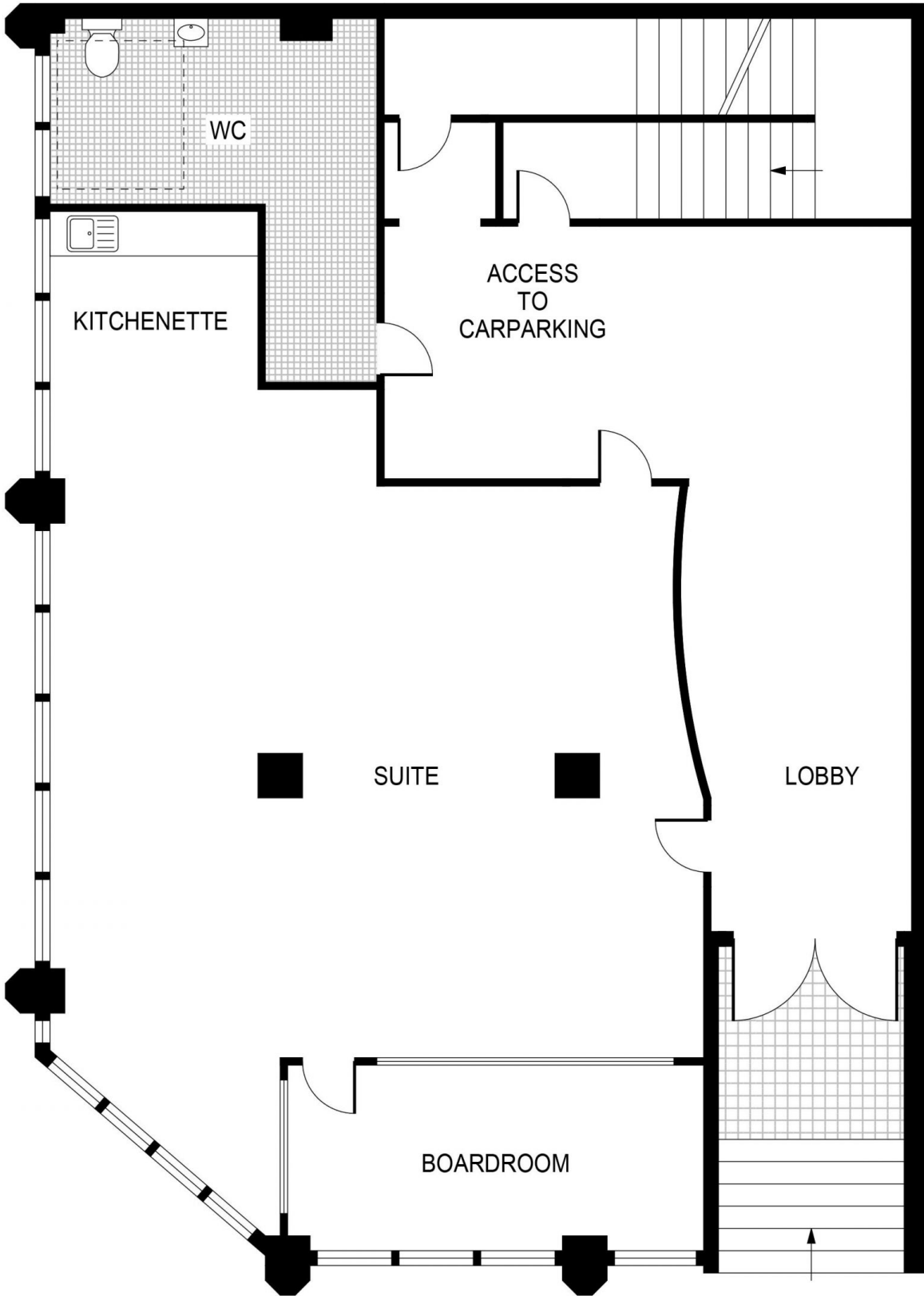
Suite G01/15 Belvoir Street Surry Hills NSW

- Area 52sqm approx.
- Boardroom
- Good natural light with windows throughout
- Air conditioned
- Access to shower
- Toilet facilities
- Internal kitchen
- Close to Central Station
- Available now!

Building Size : 52 sqm
View : <https://www.gunningre.com.au/lease/nsw/eastern-suburbs/surry-hills/commercial/offices/7797330>



Tushar Bakshi
02 9698 0222



G01/15 Belvoir Street
SURRY HILLS

GUNNING

PLANS SHOWN ONLY INDICATIVE OF LAYOUT. DIMENSIONS ARE APPROXIMATE.