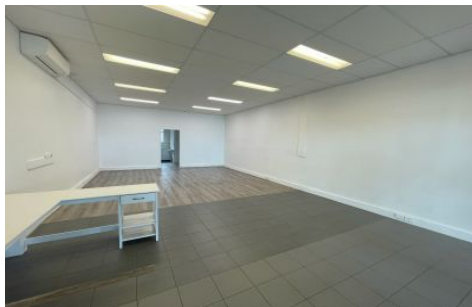
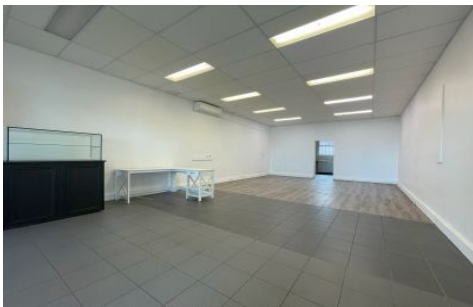


GUNNING



1/112 Pacific Highway Wyong NSW

Gunning Real Estate is pleased to present for lease this centrally located shop in the heart of Wyong. The shop is currently configured with a large open plan space at the front, with a small kitchenette/lunch room at the rear along with 2 toilets.

The property may also be modified to suit a wide range of businesses including (but not limited to) medical, beauty, professional services, food, office and other commercial & retail businesses (subject to council approval). The shop also benefits from great natural light via the floor to ceiling glass frontage onto the street.

The shop is centrally located in the heart of Wyong and is well positioned along the prominent Pacific Highway, situated across from Wyong Station and car park and within circa 180m of the popular Village Central Wyong, a

Price : \$590 per week + GST Gross
Building Size : 74 sqm
View : <https://www.gunningre.com.au/lease/nsw/central-coast-region/wyong/commercial/retail/7879670>



James McKenny
(02) 9310 9208