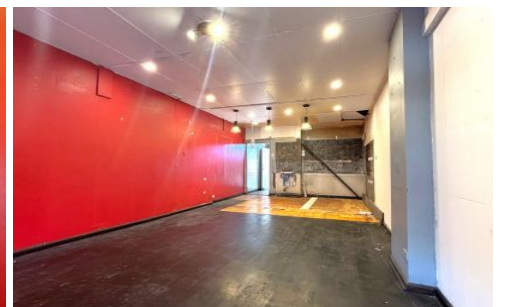


GUNNING



334 Kingsway Caringbah NSW

2 🚗

Gunning Real Estate is pleased to present this prime retail opportunity close to Caringbah train station and has rear loading and parking.

LOCATION?

Facing busy main road; 2 minutes' walk to Caringbah train station; Short walk to several public car parks, Coles, Woolworths, and Caringbah Shopping Village shopping centre.

LAYOUT:

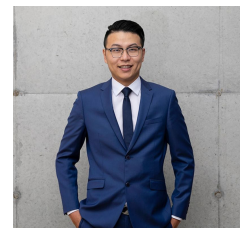
Previously used as a cafe, the property features glass frontage, an open-plan shopfront with sink, and a storeroom at the back. There is a back door which leads to toilets and rear car park.

KEY FEATURES:

Price : \$600 per week + GST, No Outgoings
Building Size : 35 sqm
View : <https://www.gunningre.com.au/lease/nsw/sutherland/caringbah/commercial/retail/7939265>



William Wu
02 9698 0222



Hong Bao
02 9310 9219