

GUNNING



3/1 Marshall Road Kirrawee NSW

9 

Gunning Real Estate is pleased to present, this large warehouse with parking. The property is fully self contained and comes complete with office space, toilet and kitchenette facilities.

KEY FEATURES

- Internal area: 590sqm*
- Nine (9) allocated car spaces
- 3 phase power
- Roller door height: 3.6m*
- Roller door width: 4.2m*
- Maximum internal height: 5.7m*
- Zone: E4: General Industrial

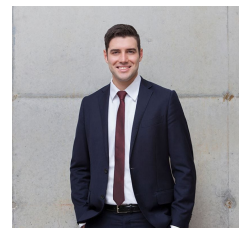
*Approximately

For more information or to inspect the property, please

Price : UNDER OFFER
Building Size : 590 sqm
View : <https://www.gunningre.com.au/lease/nsw/sutherland/kirrawee/commercial/industrial/7972451>



William Gunning
(02) 9310 9207



James McKenny
(02) 9310 9208