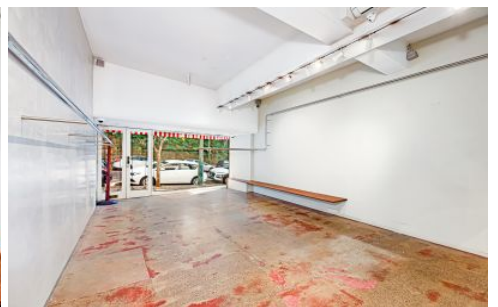
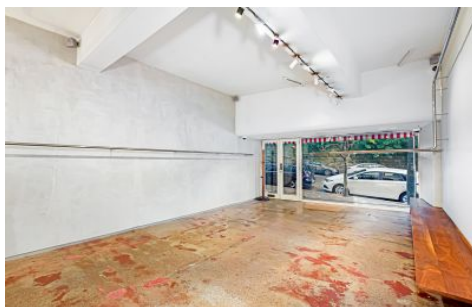


# GUNNING



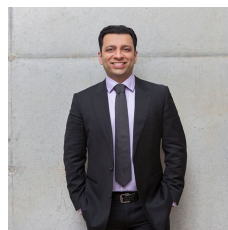
## 35 Elizabeth Bay Road Elizabeth Bay NSW

Strategically located between Potts Point and Elizabeth Bay Residential precinct, this Iconic Shop presents a fantastic opportunity to an established operator or destination concept:

- 55sqm on street level (approx 12m x 4.7m)
- 5m of Street exposure
- Storage and Toilet at the back
- Close proximity to busy Macleay St, Gazebo and other local popular shops
- Suitable for a wide range of uses (subject to council approval)

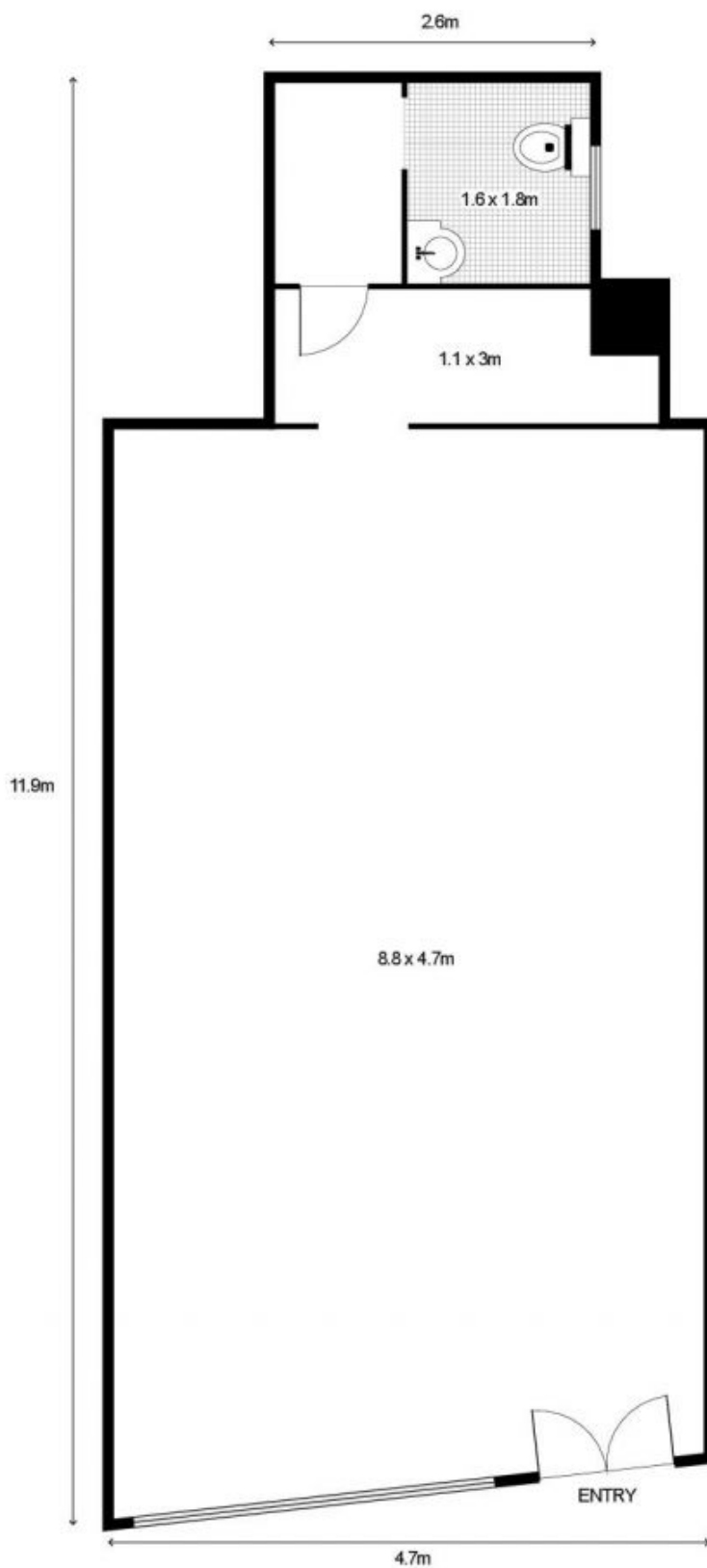
For more information or to inspect, please contact the Agent.

**Building Size** : 55 sqm  
**Land Size** : 55 sqm  
**View** : <https://www.gunningre.com.au/lease/nsw/eastern-suburbs/elizabeth-bay/commercial/retail/7980011>



**Tushar Bakshi**  
02 9698 0222

# 35 Elizabeth Bay Road, ELIZABETH BAY



# GUNNING



This floor plan is intended as a guide only. Layout dimensions are approximate only. No representation or warranties of any nature whatsoever are given or intended. Any person using this information should rely on their own enquiries.