

GUNNING



Level 3/Suites1&2/263 Clarence Street Sydney NSW

2 

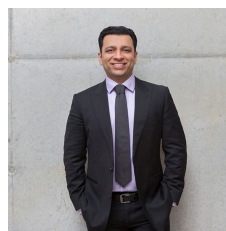
263 Clarence Street is a modern 12-storey commercial office building with three lifts and basement car parking. The building is situated between the intersections of Druiitt and Market Streets and is within a short walk of Town Hall Station, Darling Harbour, Hyde Park and Haymarket.

- 402sqm Office space on level 3:
Internal area - 367sqm or
Suite 2 - 261sqm
Suite 1 - 106sqm

- Available as fully fitted office with existing furniture (optional)
- Existing workstations, 5private offices, 1boardroom
- Reception, server room, breakout area, utility room

[For full version visit the website](https://www.gunningre.com.au/lease/nsw/sydney-city/sydney/commercial/offices/8144524)

Type : Offices
Price : Reasonable rent
Land Size : 402 sqm
View : <https://www.gunningre.com.au/lease/nsw/sydney-city/sydney/commercial/offices/8144524>



Tushar Bakshi
02 9698 0222



Daniel Gunning
02 9698 0222



Level 3, Suite 1 and 2, 263 Clarence Street, SYDNEY



Suite 1 : 106m² approx.
 Suite 2 : 269m² approx.
 Total Area : 375m² approx.

This floor plan is intended as a guide only. Layout dimensions are approximate only. No representations or warranties of any nature whatsoever are given or intended. Any person using this information should rely on their own enquiries.
 Floor plans by **JOSEF GERANIO STUDIO**. E. info@josefgeranio.com