

GUNNING



273&275 Goulburn Street Surry Hills NSW

Located near the corner of Crown and Gouldburn Street's retail precinct, this location will suit a retailer, lifestyle, hospitality or commercial operator who wants exposure amongst some of Sydney's best independent brands and companies.

An opportunity to be a part of refreshed modern retail neighborhood

- Freehold retail terraces, recently renovated
- Rear courtyard areas
- Suits fashion, retail, hair dresser, commercial, hospitality (subject to council approval) uses

Lease together or separately.

[For full version visit the website](https://www.gunningre.com.au/lease/nsw/eastern-suburbs/surry-hills/commercial/retail/8330021)

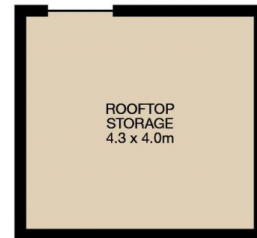
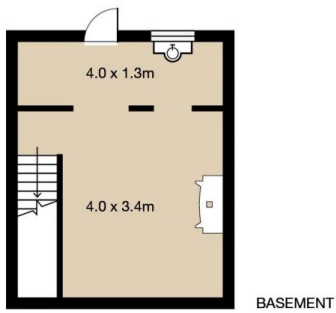
Type	: Retail
Building Size	: 275 sqm
Land Size	: 275 sqm
View	: https://www.gunningre.com.au/lease/nsw/eastern-suburbs/surry-hills/commercial/retail/8330021



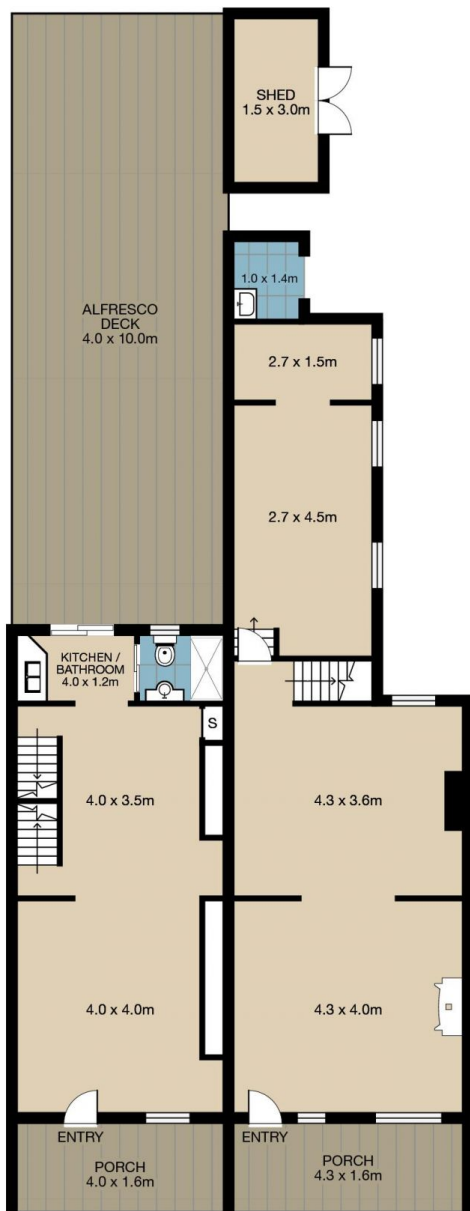
Tushar Bakshi
02 9698 0222



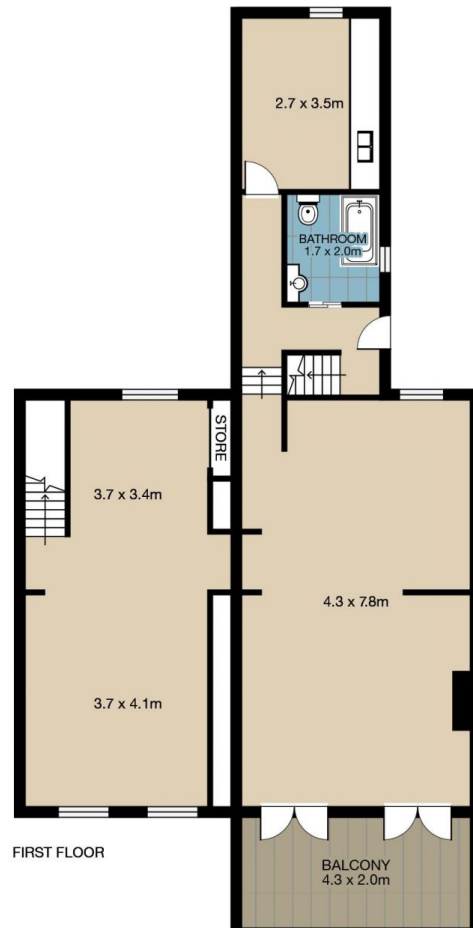
Daniel Gunning
02 9698 0222



ROOFTOP



GROUND FLOOR



FIRST FLOOR

273-275 Goulburn Street, DARLINGHURST

Total Area : 275m²

This floor plan is intended as a guide only. Layout dimensions are approximate only. No representations or warranties of any nature whatsoever are given or intended. Any person using this information should rely on their own enquiries.
Floor plans by **JOSEF GERANIO STUDIO**. E. info@josefgeranio.com