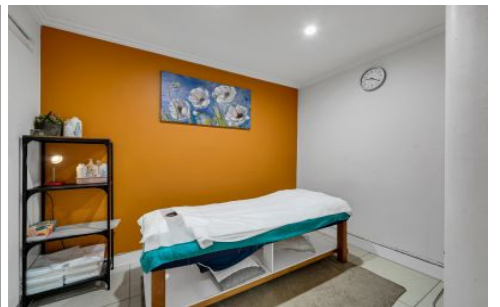


# GUNNING



## Shop 1/10-12 Belmore Street Arnccliffe NSW

1 🚗

Gunning Real Estate is pleased to present for sale this well-presented strata retail shop offering an affordable and dependable investment opportunity in one of Sydney's rising inner-south suburbs. Positioned on the ground floor of a mixed-use development just 1 minute walk to Arnccliffe Train Station, the property is surrounded by a vibrant mix of local cafes, eateries, medical, and service retailers.

This property offers both a hands-off income stream today and owner-occupier potential tomorrow, making it ideal for SMSFs, first-time commercial investors, or those seeking affordable retail with future flexibility.

- Leased to a long-standing massage operator (over 5 years of trading)

[For full version visit the website](https://www.gunningre.com.au)

**Type** : Retail  
**Price** : \$ 500,000  
**Building Size** : 64 sqm  
**View** : <https://www.gunningre.com.au/sale/nsw/st-george/arncliffe/commercial/retail/8349898>



**William Wu**  
02 9698 0222