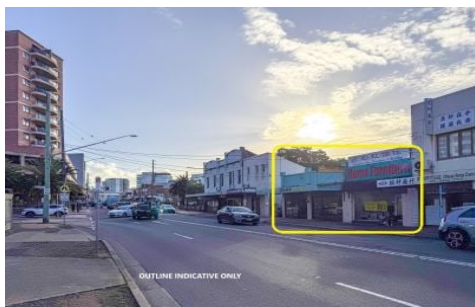


# GUNNING



OUTLINE INDICATIVE ONLY



OUTLINE INDICATIVE ONLY



## 134-136 Forest Road Hurstville NSW

Positioned in the heart of Hurstville's thriving commercial and education precinct, 134-136 Forest Road presents a rare opportunity to secure a substantial freehold asset with exceptional exposure along one of Southern Sydney's busiest arterial roads.

Located within walking distance to Hurstville Train Station and Westfield Hurstville, the property benefits from outstanding connectivity, heavy pedestrian activity and immediate access to Hurstville's vibrant retail and dining hub.

Surrounded by thousands of established apartments and ongoing high-density mixed-use developments, the property is strategically positioned within one of Sydney's

[For full version visit the website](https://www.gunningre.com.au/lease/ns-w/st-george/hurstville/commercial/retail/8699842)

<b>Type</b>	: Retail
<b>Price</b>	: Please Contact Agent
<b>Building Size</b>	: 525 sqm
<b>View</b>	: <a href="https://www.gunningre.com.au/lease/ns-w/st-george/hurstville/commercial/retail/8699842">https://www.gunningre.com.au/lease/ns-w/st-george/hurstville/commercial/retail/8699842</a>



**William Wu**  
02 9698 0222